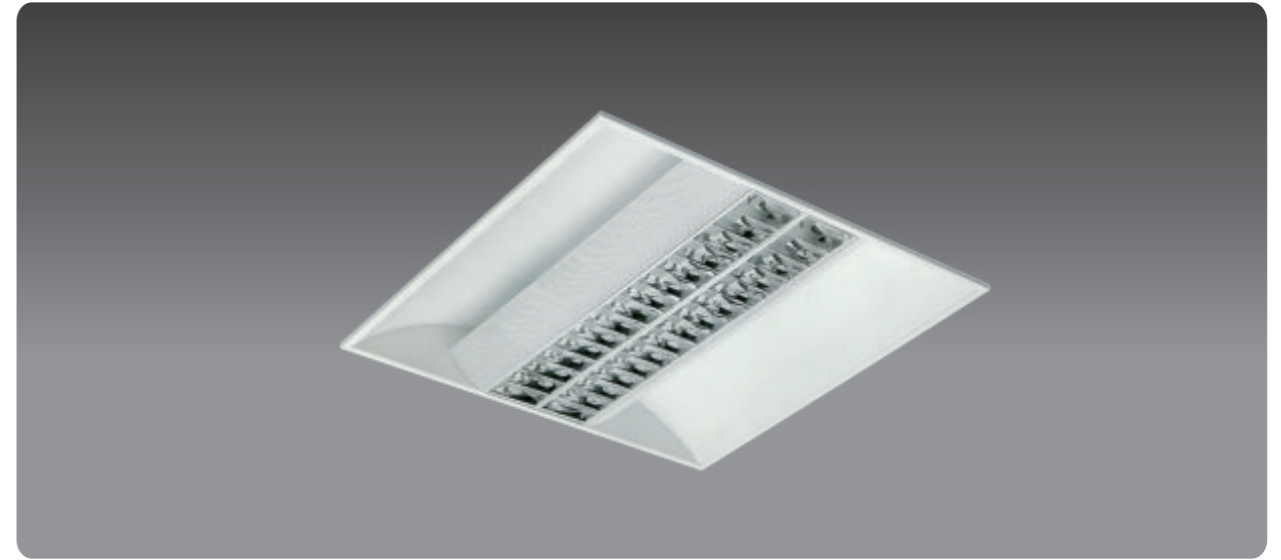




# COMBIN 2



SPECIFICATION		DATA	
Material and thickness	Cold roll steel 0.8mm	System power	40W
Diffuser Material	Polycarbonate	Total Lumen	3643LM
Reflector/purity	98%CHINESE	System efficiency	93LM/W
Cross plates Quantity V	10	UGR	<16
Frame Material/color	Metal/White	Beam angel	99.3
Certificates	CE RoHS EN62471	Driver brand	TRIDONIC/OSRAM/PHILIPS
Class	I	Dimmable	AVAILABLE
IP	IP20	PF	>0.96
Warranty	5 YEARS	THD	<20%
IK	IK05(0.7J)	Flicker free	<10%
Glow wires	850 Degrees	LED Chip brand	SAMSUNG LG
Connector	lnect/Gst18/3	LED PCB board	2PCS
Cut out hole	570x570mm	CRI	>80
External size	595x595mm	LM80 8000 hours	97.9(55degrees)
Weight	3.62KGS	L70/B50 hours	YES
Size	595x595x95mm	IES file available	YES
Box Quantity packaging size	62x61x10cm	LM79	YES
Quantity for 40"HighCube	1680pcs	Low Color Tolerance	ANSI/MacAdam 3
		DC Voltage range	54-150V

COMBIN 2 40W LED

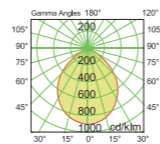
This luminaire contains built-in LED lamps.

**A++**  
**A+**  
**A**  
**B**  
**C**  
**D**  
**E**

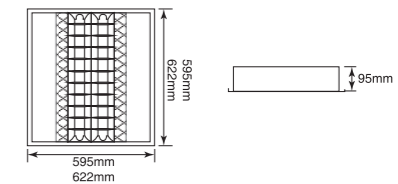
LED

The LED lamps cannot be changed in the luminaire

874/2012



H[m]	D[m]	Max Lux	Med Lux	Alpha=58°	CSLD Max foot at G
1,00	3,91	1524	435		
2,00	7,82	381	109		
3,00	11,73	169	48		
4,00	15,63	95	27		
5,00	19,54	61	17		



Nothing great was ever achieved without enthusiasm.