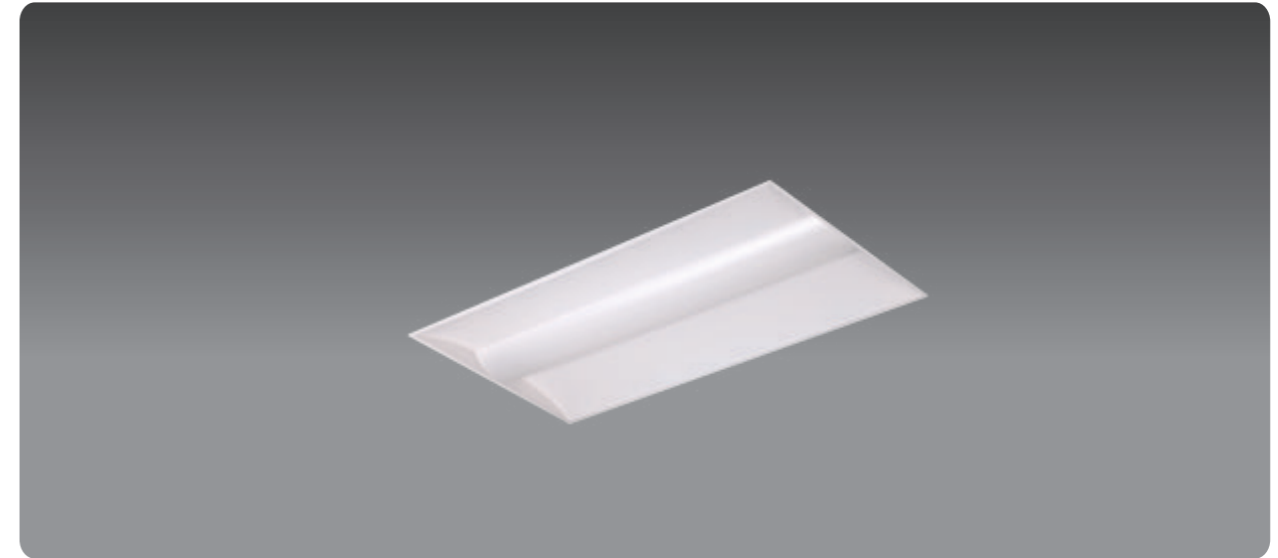




# MELLOW



SPECIFICATION		DATA	
Material and thickness	Cold roll steel 0.8mm	System power	40W
Diffuser Material	PMMA	Total Lumen	3652LM
Reflector/purity	.....	System efficiency	92LM/W
Cross plates Quantity V	0	UGR	<19
Frame Material/color	Metal/White	Beam angel	120.7
Certificates	CE RoHS EN62471	Driver brand	TRIDONIC/OSRAM/PHILIPS
Class	I	Dimmable	AVAILABLE
IP	IP20	PF	>0.96
Warranty	5 YEARS	THD	<20%
IK	IK05(0.7J)	Flicker free	<10%
Glow wires	850 Degrees	LED Chip brand	SAMSUNG LG
Connector	Linect/GST18i3	LED PCB board	2PCS
Cut out hole	1170x270mm	CRI	>80
External size	1195x295mm	LM80 8000 hours	97.9(55degrees)
Weight	4.23KGS	L70/B50 hours	YES
Size	1195x295x95mm	IES file available	YES
Box Quantity packaging size	121x30.5x11.5cm	LM79	YES
Quantity for 40"HighCube	2700pcs	Low Color Tolerance	ANSI/MacAdam 3
		DC Voltage range	54~150V

**MELLOW 40W LED**

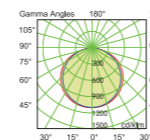
This luminaire contains built-in LED lamps.

**LED**

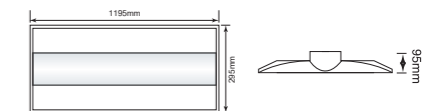
A++  
A+  
A  
B  
C  
D  
E

The LED lamps cannot be changed in the luminaire

874/2012



H[m]	D[m]	Max lux	Med lux	Alpha= 120.7°	G=0.0 Max rft at G
1,00	3,91	1524	435		
2,00	7,82	381	109		
3,00	11,73	169	48		
4,00	15,63	95	27		
5,00	19,54	61	17		





# MELLOW



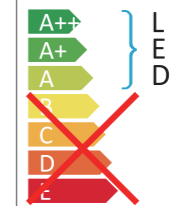
- No halo no rainbow.
- Transmission-95.50%,UGR < 19%.
- Excellent light-brilliance and precision.
- Leading to homogeneous glare reduction.

	40WESS	40W ADV
3000K	4920LM 123LM/W	4680LM 117LM/W
4000K	5200LM 130LM/W	4840LM 121LM/W

SPECIFICATION		DATA	
Material and thickness	Cold roll steel 0.8mm	System power	40W
Diffuser Material	PMMA	Total Lumen	5200LM
Reflector/purity	.....	System efficiency	130LM/W
Cross plates Quantity V	0	UGR	<19
Frame Material/color	Metal/White	Beam angel	111.9
Certificates	CE RoHS EN62471	Driver brand	TRIDONIC/OSRAM/PHILIPS
Class	I	Dimmable	AVAILABLE
IP	IP20	PF	>0.96
Warranty	5 YEARS	THD	<20%
IK	IK05(0.7J)	Flicker free	<10%
Glow wires	850 Degrees	LED Chip brand	SAMSUNG LG
Connector	Linect/GST18i3	LED PCB board	2PCS
Cut out hole	570x570mm	CRI	>80
External size	595x595mm	LM80 8000 hours	97.9(55degrees)
Weight	4.23KGS	L70/B50 hours	YES
Size	595x595x93mm	IES file available	YES
Box Quantity packaging size	62x61x10cm	LM79	YES
Quantity for 40*HighCube	1680pcs	Low Color Tolerance	ANSI/MacAdam 3
		DC Voltage range	54-150V

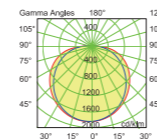
## MELLOW 40W LED

 This luminaire contains built-in LED lamps.

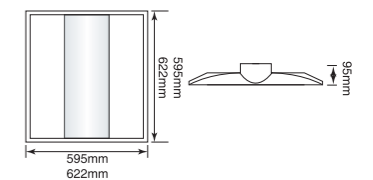


The LED lamps cannot be changed in the luminaire

874/2012



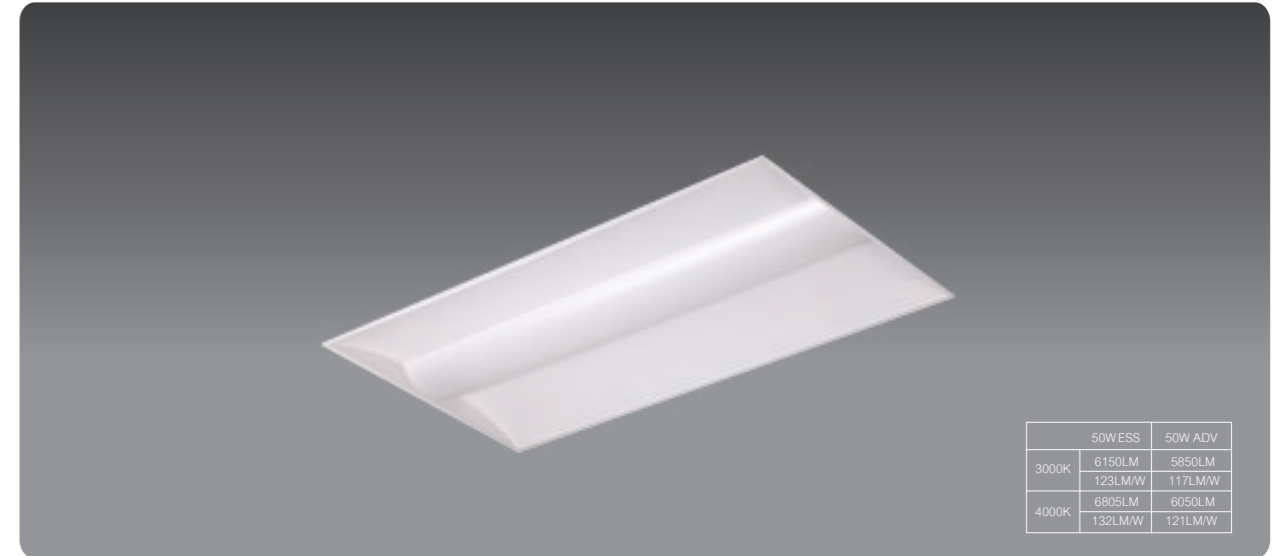
H[m]	D[m]	Max lux	Med lux	Alpha=111.9°	G=0.0	Max rft at G
1,00	3,91	1524	435			
2,00	7,82	381	109			
3,00	11,73	169	48			
4,00	15,63	95	27			
5,00	19,54	61	17			







# MELLOW





## SPECIFICATION DATA

Material and thickness	Cold roll steel 0.8mm
Diffuser Material	PMMA
Reflector/purity	.....
Cross plates Quantity V	0
Frame Material/color	Metal/White
Certificates	CE RoHS EN62471
Class	I
IP	IP20
Warranty	5 YEARS
IK	IK05(0.7J)
Glow wires	850 Degrees
Connector	Linect/GST1813
Cut out hole	.....
External size	1205x605mm
Weight	7.62KGS
Size	1205x605x100mm
Box Quantity packaging size	123x62x11cm
Quantity for 40"HighCube	900pcs


System power	50W
Total Lumen	6805LM
System efficiency	132LM/W
UGR	<19
Beam angel	113.5
Driver brand	TRIDONIC/OSRAM/PHILIPS
Dimmable	AVAILABLE
PF	>0.96
THD	<20%
Flicker free	<10%
LED Chip brand	SAMSUNG LG
LED PCB board	2PCS
CRI	>80
LM80 8000 hours	97.9(55degrees)
L70/B50 hours	YES
IES file available	YES
LM79	YES
Low Color Tolerance	ANSI/MacAdam 3
DC Voltage range	54~150V

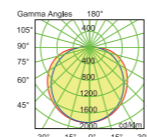
**MELLOW 52W LED**

 This luminaire contains built-in LED lamps.

 LED

The LED lamps cannot be changed in the luminaire

874/2012 



H[m]	D[m]	Max lux	Med lux	Alpha=113.5°	G=0.0	Max not at G
1.00	3,91	1524	435			
2.00	7,82	381	109			
3.00	11,73	169	48			
4.00	15,63	95	27			
5.00	19,54	61	17			

