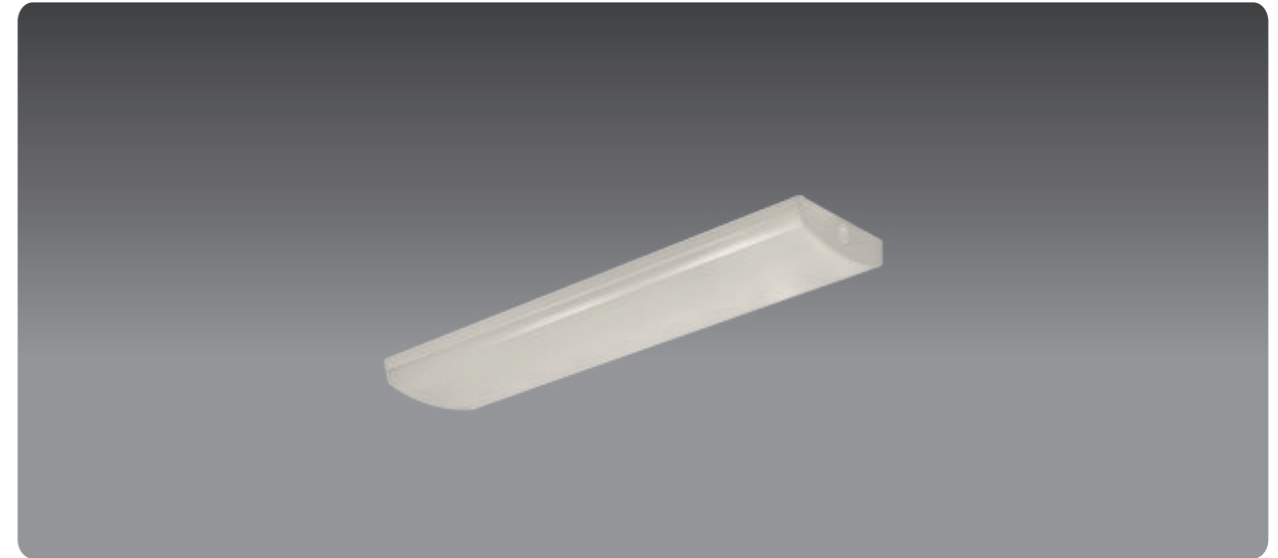




# PURELAX



SPECIFICATION		DATA	
Material and thickness	Cold roll steel 0.8mm	System power	40W
Diffuser Material	PMMA	Total Lumen	5080LM
Reflector/purity	.....	System efficiency	127LM/W
Cross plates Quantity V	0	UGR	<20
Frame Material/color	Metal/White	Beam angel	119.8
Certificates	CE RoHS EN62471	Driver brand	TRIDONIC/OSRAM/PHILIPS
Class	I	Dimmable	AVAILABLE
IP	IP40	PF	>0.96
Warranty	5 YEARS	THD	<20%
IK	IK05(0.7J)	Flicker free	<10%
Glow wires	850 Degrees	LED Chip brand	SAMSUNG LG
Connector	.....	LED PCB board	4PCS
Cut out hole	.....	CRI	>80
External size	1190x165mm	LM80 8000 hours	97.9(55degrees)
Weight	2.13KGS	L70/B50 hours	YES
Size	1190x165x85mm	IES file available	YES
Box Quantity packaging size	122x37x31cm 6pcs	LM79	YES
Quantity for 40*HighCube	2800pcs	Low Color Tolerance	ANSI/MacAdam 3
		DC Voltage range	54~150V

PURELAX 40W LED

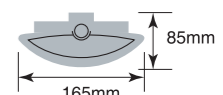
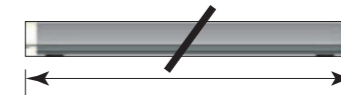
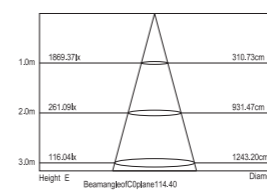
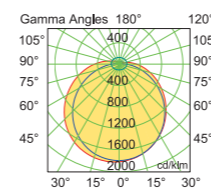
This luminaire contains built-in LED lamps.

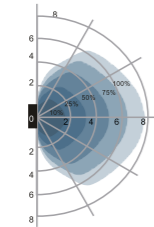
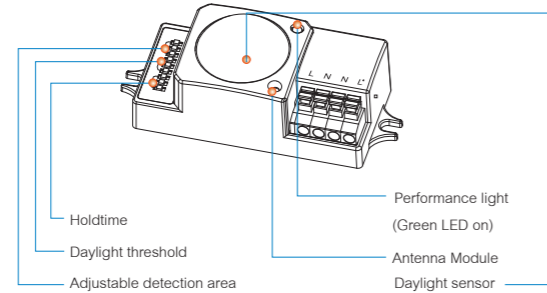
**LED**

A++  
A+  
A  
B  
C  
D  
E

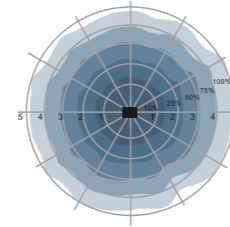
The LED lamps cannot be changed in the luminaire

874/2012





Wall mounting pattern(Unit:m)  
Suggested installation height:1-1.8mm



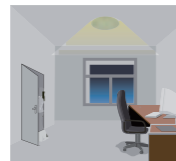
Ceiling mounting pattern(Unit:m)  
Suggested installation height:2.5-6mm



With sufficient natural light,the light does not switch on when presence detected.



With sufficient natural light,the sensor switches on the light automatically when person enters the room



People left,light dims to 10%-50%(optional) stand-by level after the hold-time



Light switches off automatically after the stand-by period elapsed.

