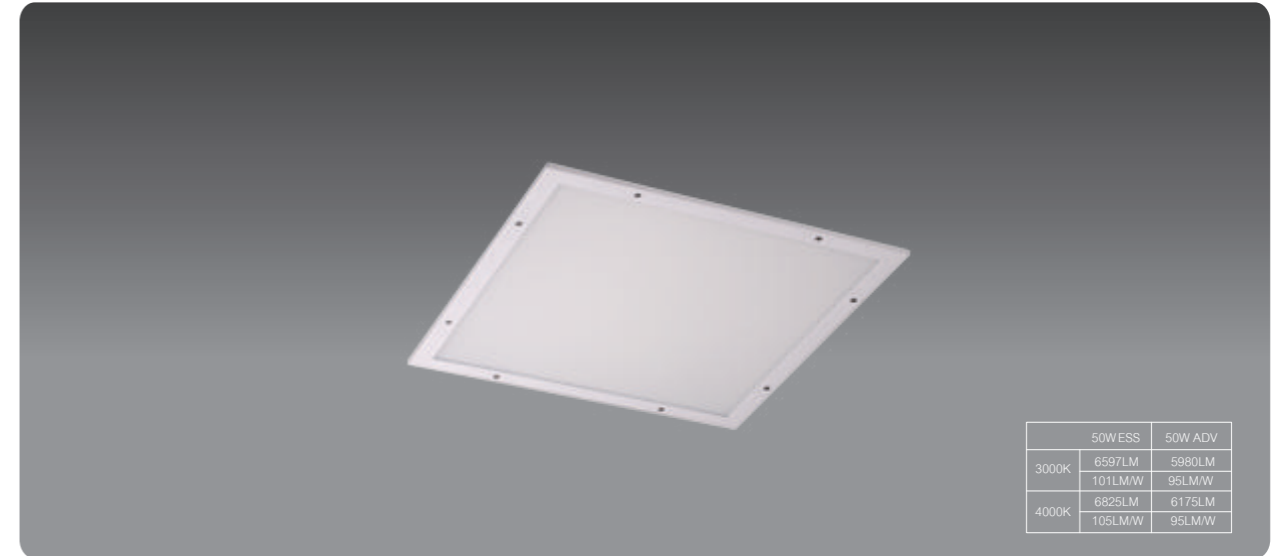




ROSS IP65



	50W ESS	50W ADV
3000K	6597LM 101LM/W	5980LM 95LM/W
4000K	6825LM 106LM/W	6175LM 95LM/W

SPECIFICATION		DATA	
Material and thickness	Cold roll steel 0.8mm	System power	45W
Diffuser Material	Prismatic	Total Lumen	4482LM
Reflector/purity	System efficiency	100LM/W
Cross plates Quantity V	0	UGR	<19
Frame Material/color	Metal/White	Beam angle	98.9
Certificates	CE RoHS EN62471	Driver brand	TRIDONIC/OSRAM/PHILIPS
Class	I	Dimmable	AVAILABLE
IP	IP65	PF	>0.96
Warranty	5 YEARS	THD	<20%
IK	IK05(0.7J)	Flicker free	<10%
Glow wires	850 Degrees	LED Chip brand	SAMSUNG LG
Connector	LED PCB board	4PCS
Cut out hole	570x570mm	CRI	>80
External size	595x595mm	LM80 8000 hours	97.9(55degrees)
Weight	6.2KGS	L70/B50 hours	YES
Size	595x595x85mm	IES file available	YES
Box Quantity packaging size	62x61x9cm	LM79	YES
Quantity for 40"HighCube	1680pcs	Low Color Tolerance	ANSI/MacAdam 3
		DC Voltage range	54~150V

ROSS IP65 45W LED

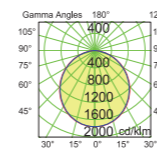
This luminaire contains built-in LED lamps.

LED

A++
A+
A
B
C
D
E

The LED lamps cannot be changed in the luminaire

874/2012



H[m]	D[m]	Max lux	Med lux	Beta=98.9°	G=0,0
1,00	2,92	2111	513		
2,00	5,85	528	128		
3,00	8,77	235	57		
4,00	11,70	132	32		
5,00	14,62	84	21		

