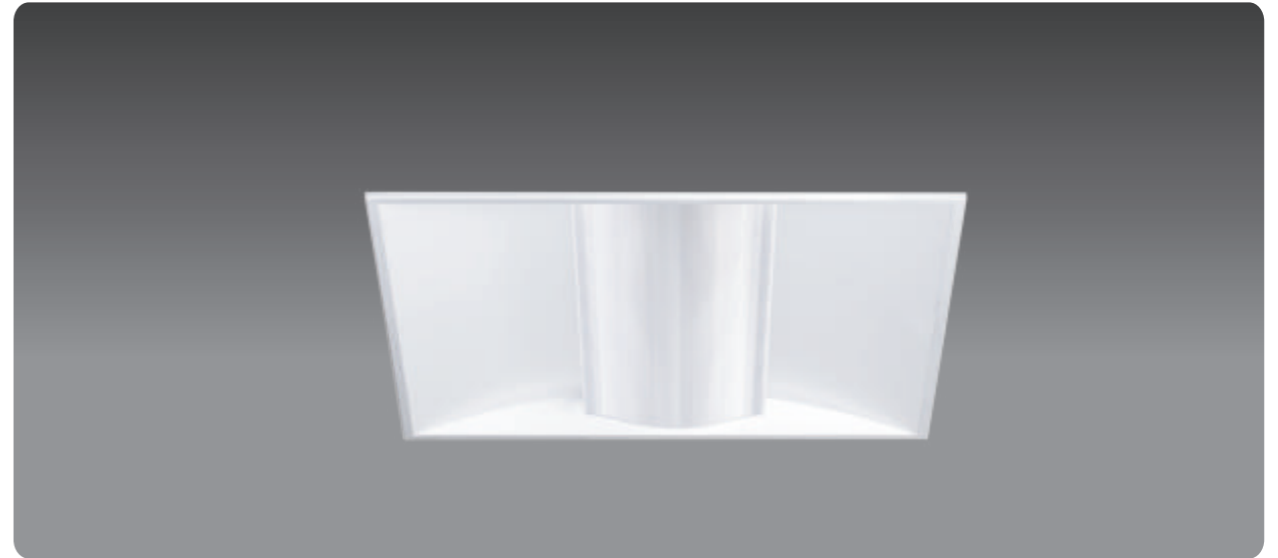




SIMPLEX

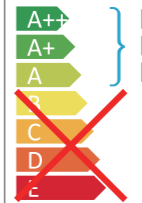


SPECIFICATION		DATA	
Material and thickness	Cold roll steel 0.8mm	System power	40W
Diffuser Material	PMMA	Total Lumen	4400LM
Reflector/purity	System efficiency	110LM/W
Cross plates Quantity V	0	UGR	<19
Frame Material/color	Metal/White	Beam angel	110.7
Certificates	CE RoHS EN62471	Driver brand	TRIDONIC/OSRAM/PHILIPS
Class	I	Dimmable	AVAILABLE
IP	IP20	PF	>0.96
Warranty	5 YEARS	THD	<20%
IK	IK05(0.7J)	Flicker free	<10%
Glow wires	850 Degrees	LED Chip brand	SAMSUNG LG
Connector	Linect/GST18i3	LED PCB board	2PCS
Cut out hole	570x570mm	CRI	>80
External size	595x595mm	LM80 8000 hours	97.9(55degrees)
Weight	3.62KGS	L70/B50 hours	YES
Size	595x595x95mm	IES file available	YES
Box Quantity packaging size	62x61x10cm	LM79	YES
Quantity for 40"HighCube	1680pcs	Low Color Tolerance	ANSI/MacAdam 3
		DC Voltage range	54~150V

SIMPLEX 40W LED



This luminaire contains built-in LED lamps.

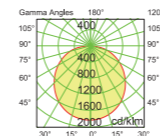


LED



The LED lamps cannot be changed in the luminaire

874/2012



H[m]	D[m]	Max lux	Med lux	Alpha=110.7°	G=0.0
1.00	3.91	1524	435		Max not at G
2.00	7.82	381	109		
3.00	11.73	169	48		
4.00	15.63	95	27		
5.00	19.54	61	17		

