



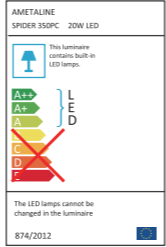


# SPIDER 350PC

# SPIDER 350PC



**100LM**

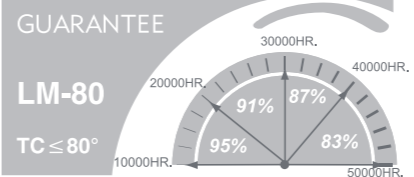







	10W	20W
LUMEN	1172LM	2072LM
EFFICACY	107LM/W	105LM/W
RENDERING	80	
CCT	3000K	
LED	OSRAM/SHARP/BRIDGELUX	
DRIVER	350MA	700MA
IP RATE	44	

**GUARANTEE**

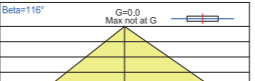
LM-80 91% 87%

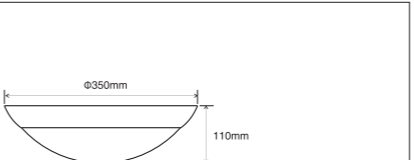
TC ≤ 80° 95% 83%



H[m]	D[m]	Max lux	Med lux	Beta=116°
1,00	3,37	141	28	
2,00	6,74	35	7	
3,00	10,10	16	3	
4,00	13,47	9	2	
5,00	16,84	6	1	

H[m]	D[m]	Max lux	Med lux	Beta=116°
1,00	3,37	241	78	
2,00	6,74	70	50	
3,00	10,10	32	15	
4,00	13,47	18	9	
5,00	16,84	10	5	



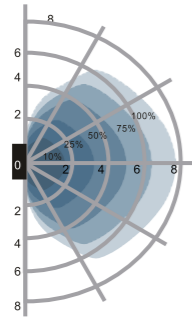
Ø350mm  
110mm



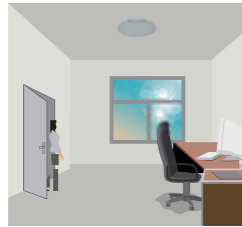
- Energy efficiency.
- Free maintenance.
- Soft quality light of visual comfort.
- Optics len light transmission >= 85%.
- Twist on and off make easy installation.
- Other selectional wattages is interchangeable.
- Multi-fixed to ceilings.
- General lighting and emergensy lighting application in corridors stairwells,kitchens etc.



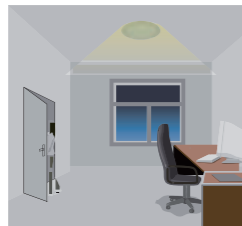
Interchangeable and selective lumen plate.  
Please request manufactory.  
Male/Female connection to create  
quicker replacement by household.



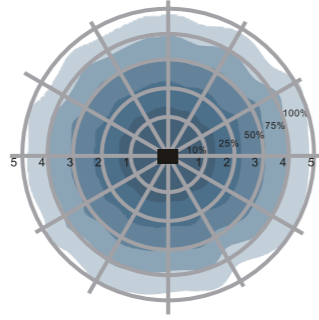
Wall mounting pattern(Unit:m)  
Suggested installation height:1-1.8m



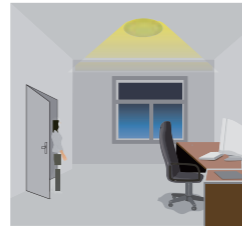
With sufficient natural light,  
the light does not switch on  
when presence detected.



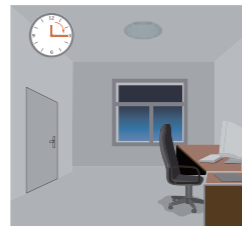
People left,light dims to  
10%-50%(optional)  
stand-by level after the  
hold-time.



Ceiling mounting pattern(Unit:m)  
Suggested installation height:2.5-1.8m

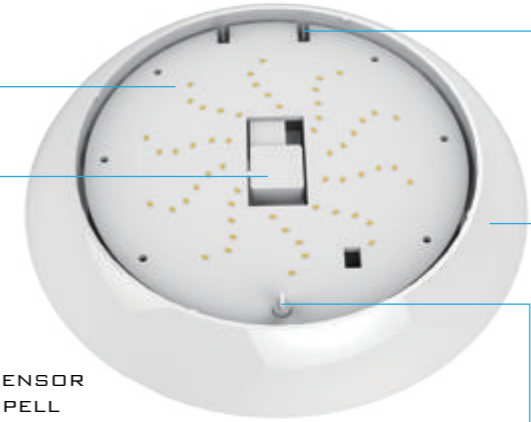


With sufficient natural light,  
the sensor switches on the  
light automatically when  
person enters the room.



Light switches off automatically  
after the stand-by period elapsed.

EXTRA ALUMINIUM PLATE SUPPLY EXCLUSIVE  
SEAT FOR THE PCB SIT AND HEAT SINK FLAT .

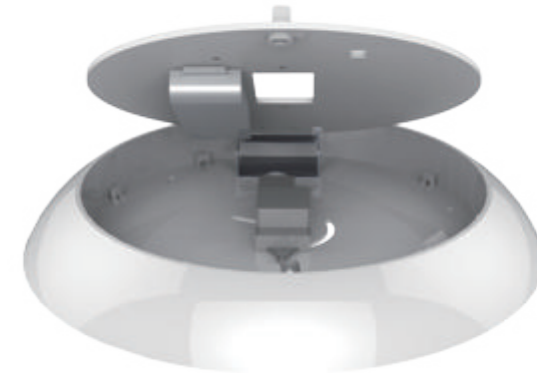


ROTATION SUPPORT

DEFLECTION TEMP.  
UNDER BTC.

WITH SPACE RESERVED FOR SENSOR  
BETTER DETECTION,TEXTS SPELL  
NEXT AS BETTER GUIDE.

QUICK DEVICE  
ASSIST ROLD / RELOAD EASILY,



INTERNAL CONSTRUCTION

# SPIDER IP65



# SPIDER IP65



AMETALINE  
SPIDER IP65 15W LED

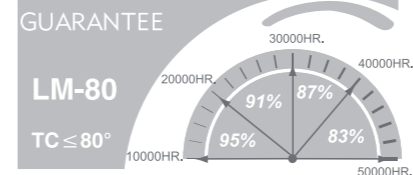
This luminaire contains built-in LED lamps.

A+ A A- D F

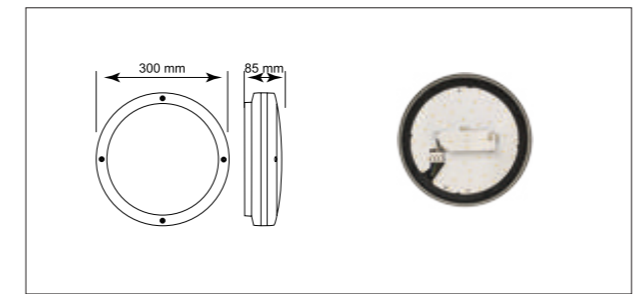
The LED lamps cannot be changed in the luminaire.

874/2012

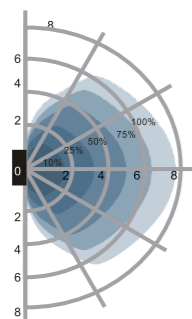
	15W	30W
LUMEN	1485 LM	2700 LM
EFFICACY	99 LM/W	90 LM/W
RENDERING	80	
CCT	3000K	
LED	OSRAM/SHARP/BRIDGELUX	
DRIVER	700MA	700MA
IP RATE	65	65



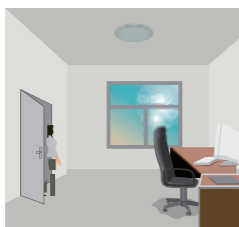
Gamma Angles	H[m]	D[m]	Max lux	Med lux	Beta=55.1°+62.7°	G=50V Max lux at G
100°	1.00	3.37	141	28		
75°	2.00	6.74	35	7		
60°	3.00	10.10	16	3		
45°	4.00	13.47	9	2		
	5.00	16.84	6	1		



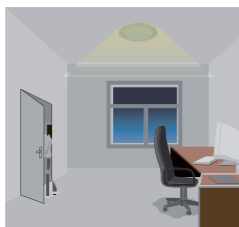
- Design for exterior use.
- Suitable for vandal resistant areas.
- Die-cast aluminium housing.
- Opal and excellent led transitive PC diffuser.
- Fitted with security screws.



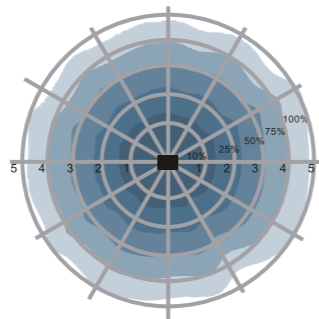
Wall mounting pattern(Unit:m)  
Suggested installation height:1-1.8m



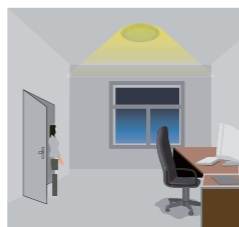
With sufficient natural light,  
the light does not switch on  
when presence detected.



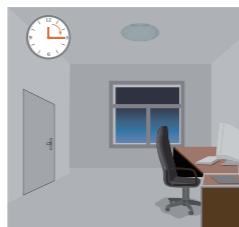
People left,light dims to  
10%-50%(optional)  
stand-by level after the  
hold-time.



Ceiling mounting pattern(Unit:m)  
Suggested installation height:2.5-1.8m



With sufficient natural light,  
the sensor switches on the  
light automatically when  
person enters the room.



Light switches off automatically  
after the stand-by period elapsed.

