



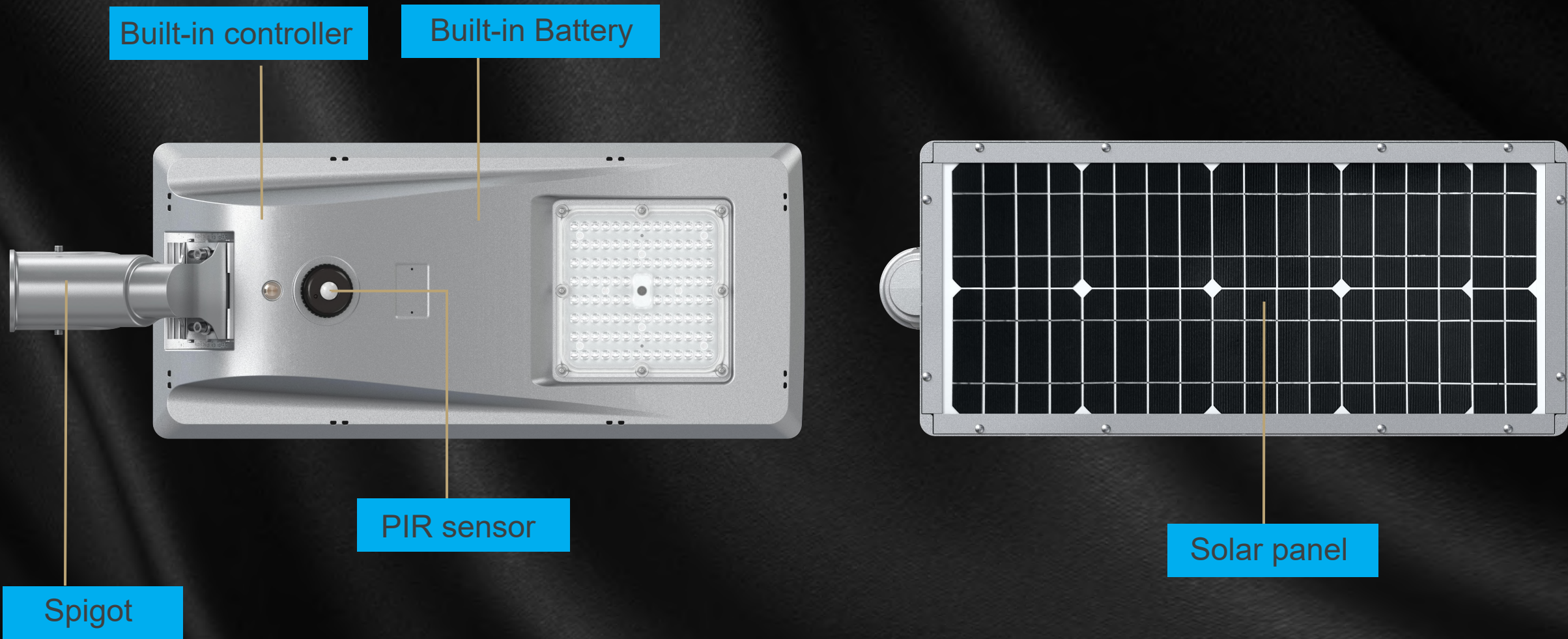
NT43/NT44 10-60W
All in One Solar Street light

Designed to operate reliability at high light output area.

01 PRODUCT INTRODUCTION

NT43/NT44 with all in one design is Integrated with solar panel, battery, controller & Sensor, easy to install, no need for wiring, brings light to areas without access to electric grid.

WHAT IS ALL IN ONE SOLAR STREET LIGHT?



PRODUCT IMAGES

NT43

10W 20W 30W
Variants from 2000lm to 6000lm



NT44

40W 50W 60W
Variants from 8000lm to 12000lm




SPECIFICATIONS

SPECIFICATION	2000 Lumens	4000Lumens	6000 Lumens	8000 Lumens	10000 lumens	12000 lumens
MODEL	NT43-10	NT43-20	NT43-30	NT44-040	NT44-050	NT44-060
WATTAGE	10w	20w	30w	40w	50w	60w
COLOR TEMP	4000K (3000K, 5000K optional)					
EFFICIENCY	200 LM/W					
OPTIC	Type II Medium					
LED CHIP	SMD 2835 LED chips					
BATTERY	LiFePO4 - 6Ah 12.8V(76 Wh)	LiFePO4 - 12Ah 12.8V (156Wh)	LiFePO4 - 18Ah 12.8V (230Wh)	LiFePO4 - 24Ah 12.8V (307.2Wh)	LiFePO4 - 30Ah 12.8V (384Wh)	LiFePO4 - 36Ah 12.8V (460.8Wh)
Controller	PWM			MPPT		
SOLAR PANEL TYPE	Mono-Crystalline					
CHARGING TIME	>3 hrs	>6 hrs	>9 hrs	>6 hrs	>7 hrs	>9 hrs
AUTONOMY	Full power>8 hours,Intelligent mode 3-4 days					
IP RATING	IP65					
OPERATION MODE	Remote control with one-key setting					
CONTROL	Timmer dimming/PIR sensor					
INSTALLATION HEIGHT	3-7m, horizontal and vertical pole mounting options.					
OPERATING TEMPERATURE	0°C~50°C					

FEATURES

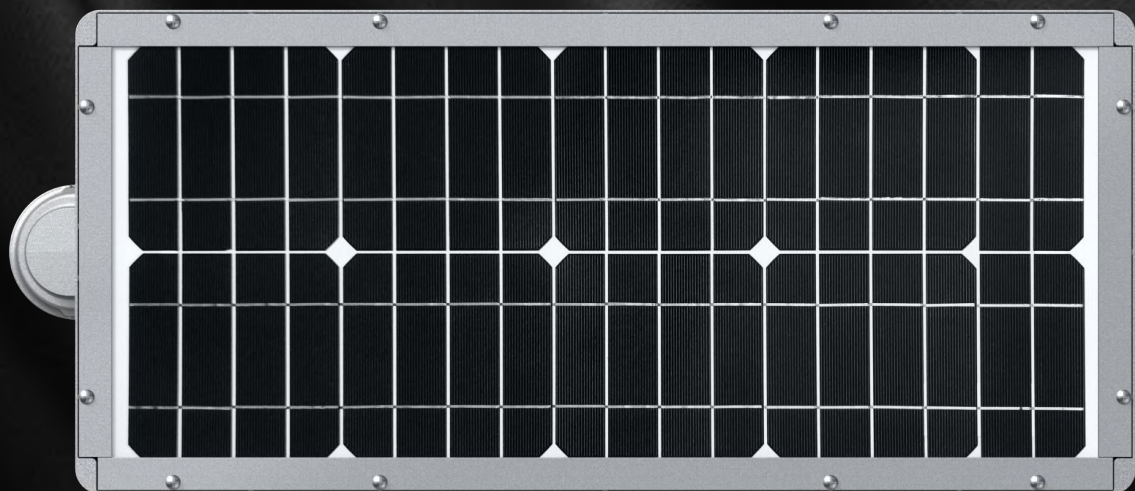
Compact and integrated design, easy to ship and install.

		
<p>street light</p>	<p>Separate led solar street light</p>	<p>NT43/44 All-in-one led solar street Led</p>
<p>High electricity bills. Cannot independent work of the utility grid, spent a lot of time and labor cost in cabling and lighting.</p>	<p>Energy saving. Consists of several parts with big size, very expensive to shipment, complex installment.</p>	<p>Energy saving. Compact design to save freight cost. Easy to shipment and very fast installation (1 to 2 mins).</p>

FEATURES

MONO-CRYSTALLINE SOLAR PANEL

With 21% conversion rate mono-crystalline solar panel, the panel could help store more energy in rainy day, lifespan is much longer and lighting output performance is better.



BATTERY AND CONTROLLER

Battery and controller inside the fixture, easier to transport and install. Ours solar street light adopts LiFePO4 battery, high temperature resistance, large current discharge, life cycle more than 2000 times.



UP TO 200LM/W, TYPE II LIGHTING DISTRIBUTION

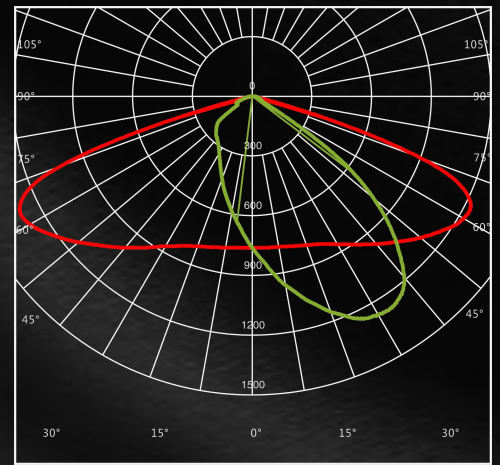
Ours solar LED luminaire adopts a compact size, smooth and simple design, 10W/20W/30W/40W/50W/60W optional. Type II lighting distribution could be used in rural street, and single lane road, etc. Super high efficiency up to 200LM/W. **Ours 60w, 12000lm, even equal to competitors' 80-100w fixtures.**

STREETLIGHT PHOTOMETRIC TEST REPORT					
Test:U:33.00V I:0.6000A P:19.80W PF:1.0000 Freq:0Hz UTHDi:0% ITHDi:0% Lamp Flux:3969x1 lm					
NAME: NT43-020-4070-R01801		TYPE:		WEIGHT:	
SPEC.:		DIM.:		SERIAL No.:	
MFR.:		SUR.:		Shielding Angle:	
DATA OF LAMP			PHOTOMETRIC DATA		
			Eff: 200.45 lm/W		
MODEL	/	I _{max} (cd)	2362	η street_up (%)	0.0
NOMINAL POWER (W)	/	LOR (%)	100.0	η street_down (%)	71.6
RATED VOLTAGE (V)	/	TOTAL FLUX (lm)	3969	η house_up (%)	0.0
NOMINAL FLUX (lm)	3969	MAXIMUM @ (C, γ)	165,68.5	η house_down (%)	28.4
LAMPS INSIDE	1	η up (%)	0.0	76 FLASHAREA (m2)	
TEST VOLTAGE (V)	/	η down (%)	100.0	SLI	

Optic lens

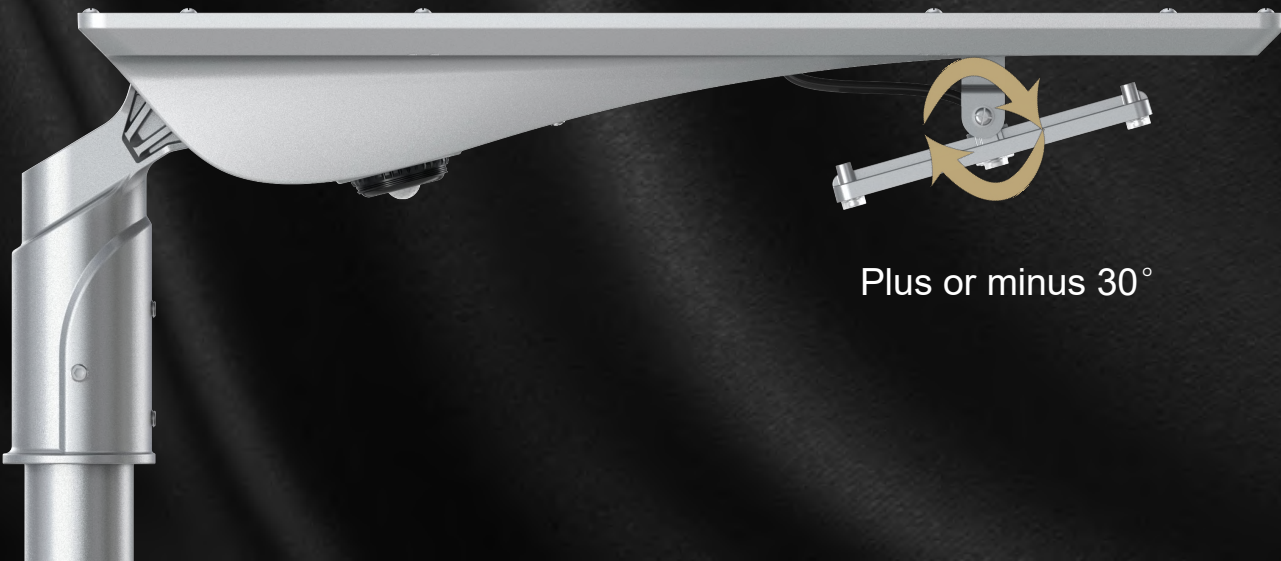
High transmittance PC materials, UV test approval.

Code: please refer to Photometry for different beam angle.



ADJUSTABLE ANGLE MODULE OPTIONAL

Adjustable angle module optional, for the convenience of harvesting good sunlight.



Plus or minus 30°

MAIN FEATURES LIST

1

Low operation cost: All in one design is Integrated with solar panel, battery, controller & Sensor, easy to install, no need for wiring, brings light to areas without access to electric grid. The operation cost is very low.

2

Safety upgrade: Without external wires, the risk of accidents are minimized.

3

Environment protection: Electricity produced from solar panels is non-pollutive, environmentally friendly.

4

Low-energy consumption: Ours solar street light together with a motion detector, offers a solution of low-energy consumption, long-lasting and high-luminance as well as free maintenance for at least 3 years.

5

Flexible working mold: available for different kinds of working mold, for different seasons and weather.

6

Quick charge: adopted mono-crystalline solar panel, with high conversion rate, realize quick charge to battery.

7

Multiple mount: Horizontal and vertical mount optional, and also could realize different pole mount if necessary.

HOW DOES SOLAR STREET LIGHT WORK?



solar energy convert to electrical power

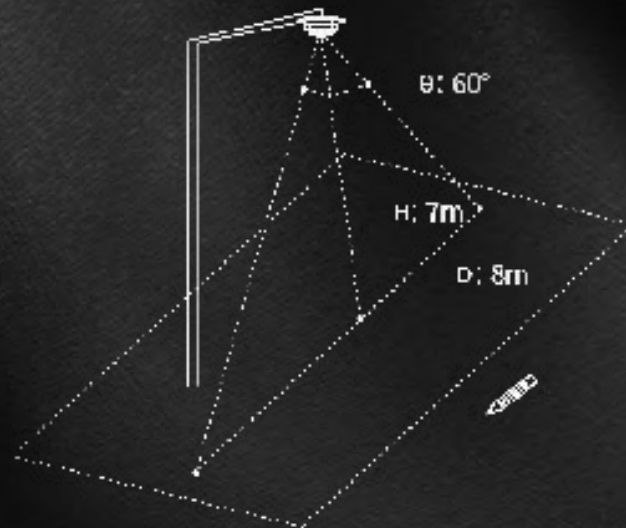
Charging

Discharging

PIR Sensor

Sensor Range

Remote Control



$\theta: 60^\circ$
H: 7m
D: 8m



Factory setting: 1st 4 hours from dusk: 30% brightness. If presence detected, luminaire goes to 100%.
Next 4 hours: 20% brightness, if presence detected, luminaire goes to 60%.
Last 3 hours: 10% brightness.

02

INSTALLATION, DIMENSIONS & APPLICATIONS

An flexible installation product is usually popular by electricians and contractors.

INSTALLATIONS

Ours solar street light could be mounted horizontally and vertically, the spigot allows adjustable at -15° to $+15^{\circ}$, which enables the solar panel could be adjusted accordingly to the sunshine direction so that get the best position to store the solar energy.

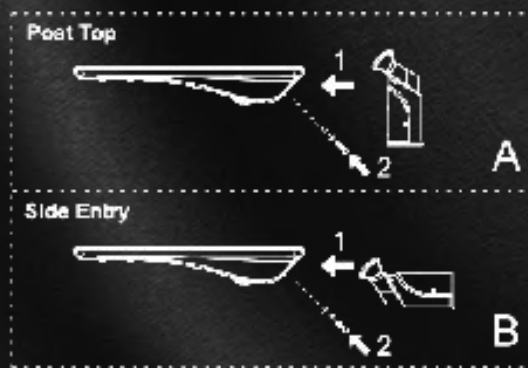
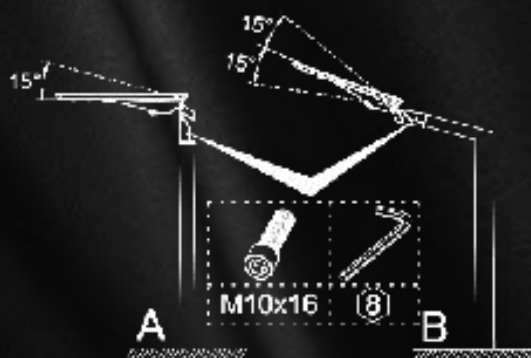
Those mounting flexibility greatly improves the charging efficiency, also makes sure the luminaire could be used in more areas with various locations.



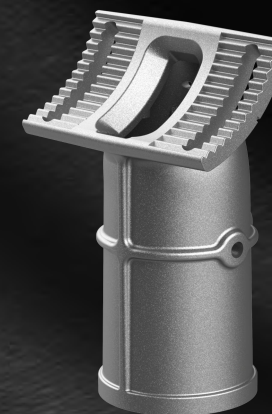
Side Entry



Post top



10-30w



40-60w

INSTALLATIONS 10-30W ONLY

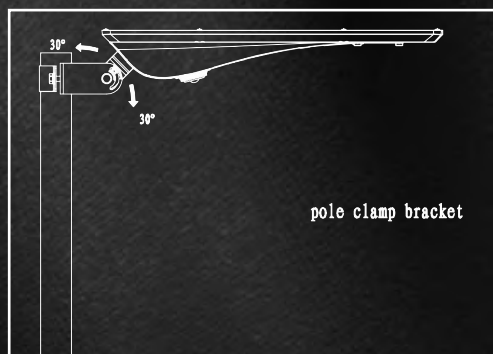
10-30W solar street light could be pole clamp brakcet mount and wall mount, the bracket allows adjustable at -30° to $+30^{\circ}$, which enables the solar panel could be adjusted accordingly to the sunshine direction so that get the best position to store the solar energy.



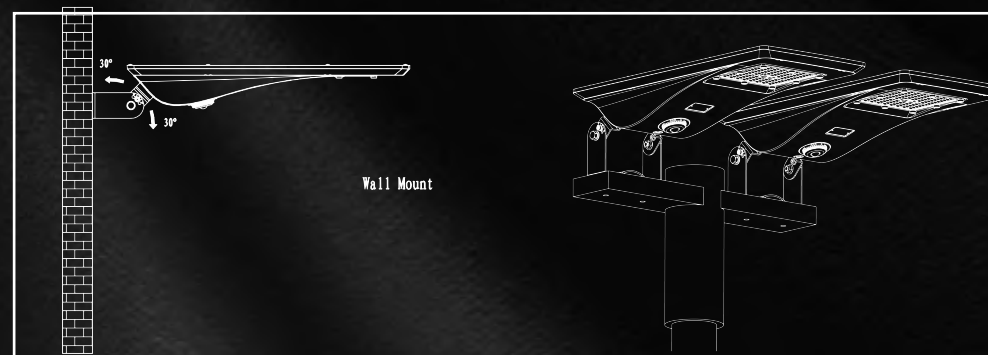
Pole clamp bracket



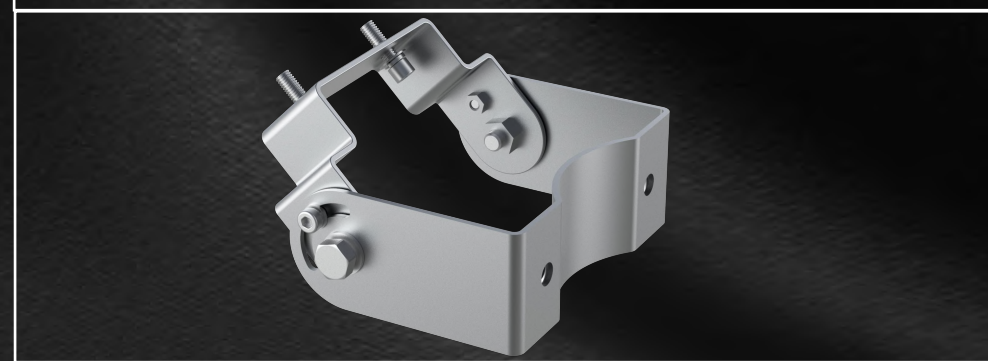
Wall Mount



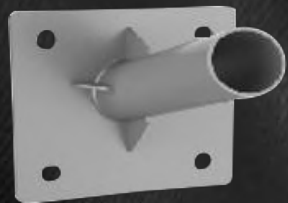
pole clamp bracket



Wall Mount



MORE ACCESSORIES OF SPIGOT



Wall mount adaptor

SPCC materials with outdoor powder coating.
Code: SP-R03-05



T shape pole mount adaptor

SPCC materials, for dia.60/ 76mm pole
Code: SP-R03-06(for dia.60mm)
Code: SP-R03-08(for dia.76mm)



T shape pole mount adaptor

Q235 with Akzo Powder Coating materials, for 100x100mm square pole.

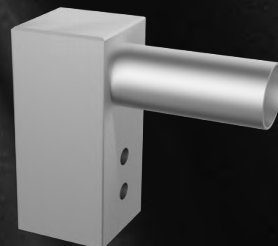
Code: SP-R03-07



L shape pole mount adaptor

SPCC materials, for dia.90mm pole

Code: SP-R03-09(for dia.90mm)



L shape pole mount adaptor

Q235 materials, for 100x100mm square pole.

Code: SP-R03-10



Corner mount adaptor

SPCC materials with outdoor powder coating.

Code: SP-R19-02

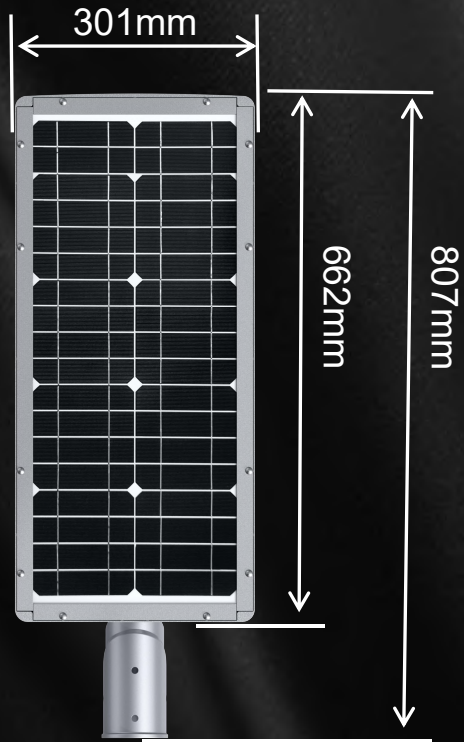


L shape pole mount adaptor

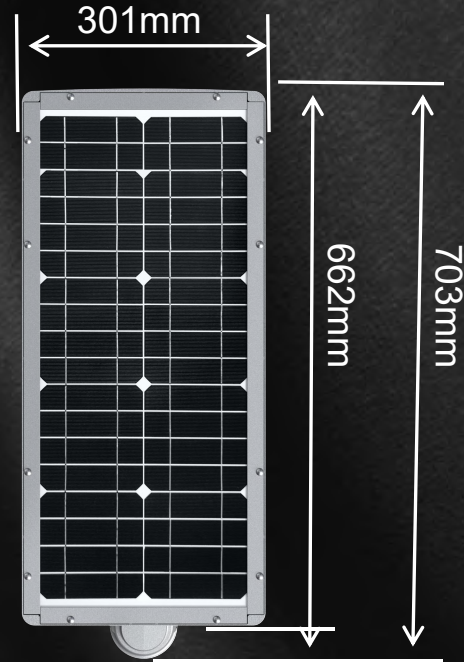
SPCC materials, for dia.60mm pole
Code: SP-R19-01(for dia.60mm)

DIMENSIONS 10-30W

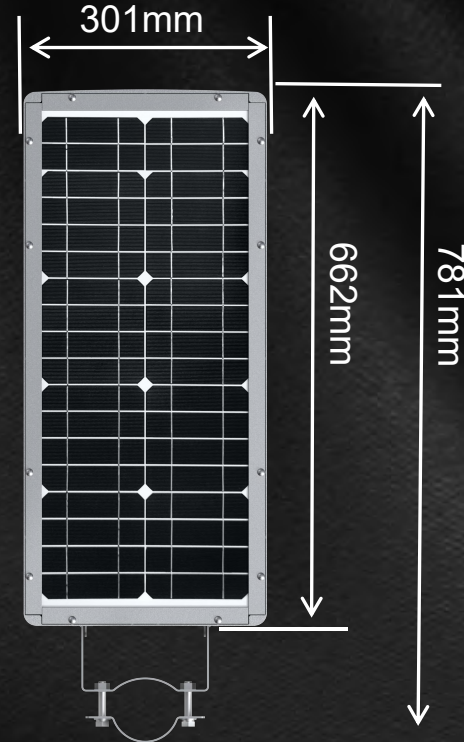
Side entry mounting



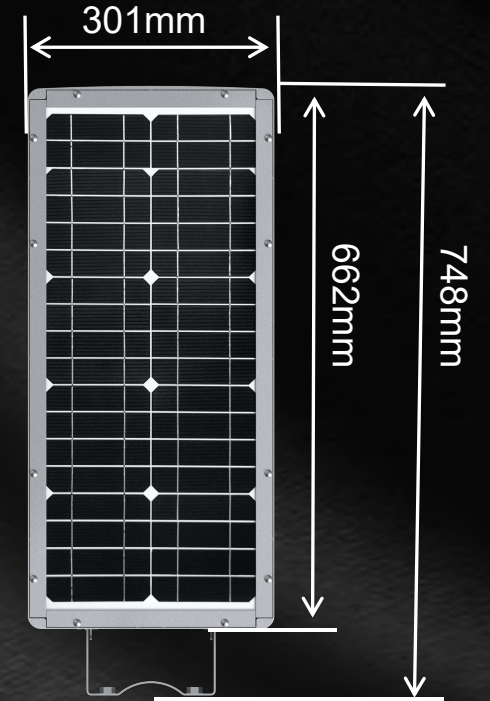
Post top mounting



Clamp Bracket mounting



Wall mounting



DIMENSIONS 40-60W

Side entry mounting

Post top mounting

